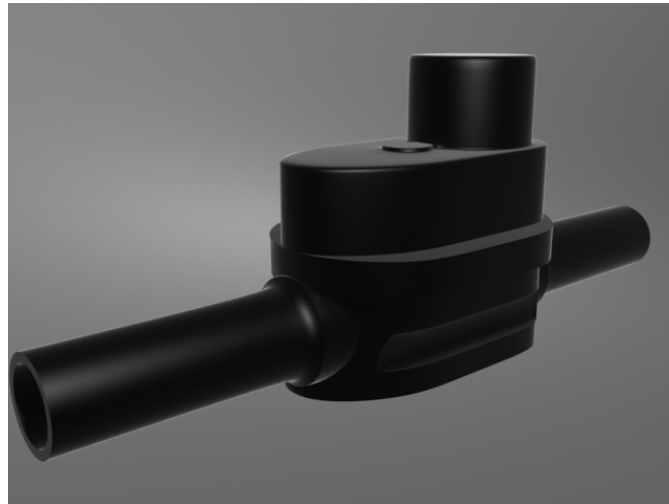


## SPECIFICATIONS

### Excess Flow Valve de32 EFV SDR11



#### Service conditions

Maximum working pressure: 10 bar (145 psi)  
 Temperature range: -20°C to +40°C  
 Shut off: at 4 bar flow velocity 25 m/s  
 (Standard configuration)

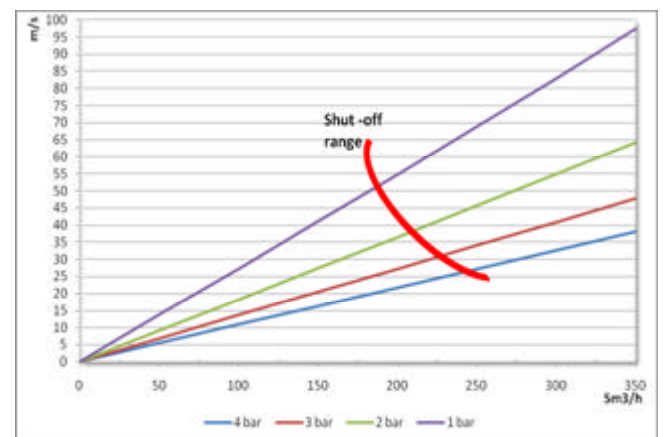
Tested in according to EN 1555-4

#### Materials of construction

Valve body	PE100
Closing membrane	Acetal (POM)
Counter weight	Acetal (POM)
Seal	Elastolan

#### Dimensions

Total Height	mm	135
Total Length		306
Total Weight	kg	0,63



**Fluma AS**  
 P.O. Box 8034  
 4068 Stavanger  
 Norway

Telephone: +47 51 87 47 01  
 E-mail: info@fluma.no  
 www.fluma.no