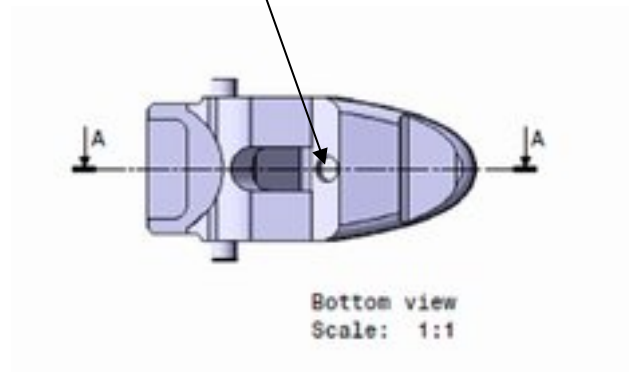


## Controlled By-pass

In the wing, the closing membrane, a **hole is drilled**, size 0,5 – 1,0 mm depending on pressure range and customer specifications.



At 4 barg bypass flow is approx. 0,8 m<sup>3</sup>/h. This flow is considered safe to perform a repair of a damaged pipe.

For pipes in dimension 32 mm:

A 100 m pipe will be re pressurized and the Fluma EFV will open in 20 minutes.

A 50 m pipe re pressurized and the Fluma EFV will open in 10 minutes.

A 25 m pipe re pressurized and the Fluma EFV will open in 5 minutes.

A 10 m pipe re pressurized and the Fluma EFV will open in 2 minutes.